

Presetting list

Sorted by position in WinTool list

10205-CC93 REV.12

W/C 00092

00244.NC

O-Number 50
 Description JACK SHAFT (CARTRIDGE DRIVE)
 Target date
 Reference LAYOUT 10205-CC93L1
 Comments

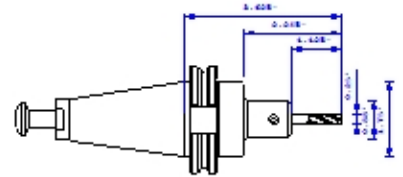


Material

--

420084 ENDMILL .25000 HANITA CBD
 T 1 1/4" 4 FL CC END MILL
 CBD TiN

D 1
 H 1
 X1 0.25
 Z1 3.625

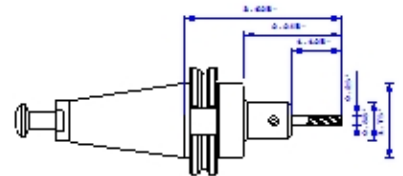


4 2 0 0 8 4

	Dia.	Radius	C Length	Angle	Storage location
CAT RETENTION KNOB	0.00	0	0	0	
1					10016
PARLEC 1/4 ENDMILL HOLDER WELDON .25 DIAMETER	0.88	0.25	0	0	
1					10018
ENDMILL .25000 HANITA CBD 1/4" 4 FL CC END MILL CBD TiN	0.25	0.75	0	0	
1					10078

420280 ENDMILL .25000 HANITA CBD
 T 2 1/4" 5 FL CC END MILL
 CBD TiCN

D 2
 H 2
 X1 0.25
 Z1 3.625




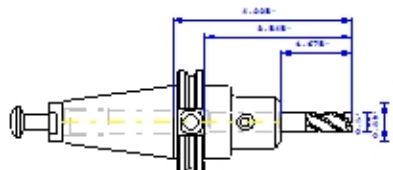

4 2 0 2 8 0

	Dia.	Radius	C Length	Angle	Storage location
CAT RETENTION KNOB	0.00	0	0	0	
1					10016
PARLEC 1/4 ENDMILL HOLDER WELDON .25 DIAMETER	0.88	0.25	0	0	
1					10018
ENDMILL .25000 HANITA CBD 1/4" 5 FL CC END MILL CBD TiCN	0.25	0.75	0	0	
1					10077



Presetting list

Sorted by position in WinTool list

420003	EMILL 3/4 4F SE TiCN 3/4 CENTER CUTTING CBD TiCN	D 3 H 3 X1 0.75 Z1 4.72				
T 3						
	4 2 0 0 0 3	Dia.	Radius	C Length	Angle	Storage location
1	CAT RETENTION KNOB	0.00	0	0	0	10016
	CAT 40 HYDRAULIC SCHUNK 0203936 .7500" 24405-0804-1806	1.57	0.75	0	0	1 0 1 0 0
1	EMILL 3/4 4F SE TiCN 3/4 CENTER CUTTING CARBIDE TiCN	0.75	1.5	0	0	10067
420161	ENDMILL .500 HANITA FINISH 1/2" 4 FL CC VARIMILL CBD TiCN	D 5 H 5 X1 0.5 Z1 4.295				
T 5						
	4 2 0 1 6 1	Dia.	Radius	C Length	Angle	Storage location
1	CAT RETENTION KNOB	0.00	0	0	0	10016
	PARLEC 1/2 ENDMILL HOLDER WELDON .500 DIAMETER	0.89	0.5	0	0	1 0 4 4 7
	ENDMILL .500 HANITA FINISH 1/2" 4 FL CC VARIMILL CBD TiCN	0.50	1.06	0	0	1 0 5 7 0
420009	DRILL .25700 CBD OSG 5260 5D CARBIDE	D 11 H X1 0.2571 Z1 5.0776				
T 11						
	4 2 0 0 0 9	Dia.	Radius	C Length	Angle	Storage location
1	CAT RETENTION KNOB	0.00	0	0	0	10016

