

Integrate Mastercam in Your Tooling Solution

The new interface enables Mastercam to access the powerful online *WinTool* tool database. Within seconds you'll find all the available tools in your shop for your NC operation and get precise tool data such as geometry, 3D-models, and technology values. Once your NC Program is finished, the WT-Mastercam interface automatically generates a *WinTool* tool list. The result: better NC programs, concise setup instructions (with tool assembly graphics), full process integration, and significant reduction of unproductive work time.

Features

Editing

- Easy editing of realistic tool data incl. tool assemblies and lists

Import / Export

- *WinTool* toolbar for online data
- *WinTool* tool search window
- *WinTool* tool list import
- Import tool geometry parameters and feeds/speeds technology
- Automatic rotational 3D models
- Support of special tools
- Automatic generation of tool lists

WinTool Extensions

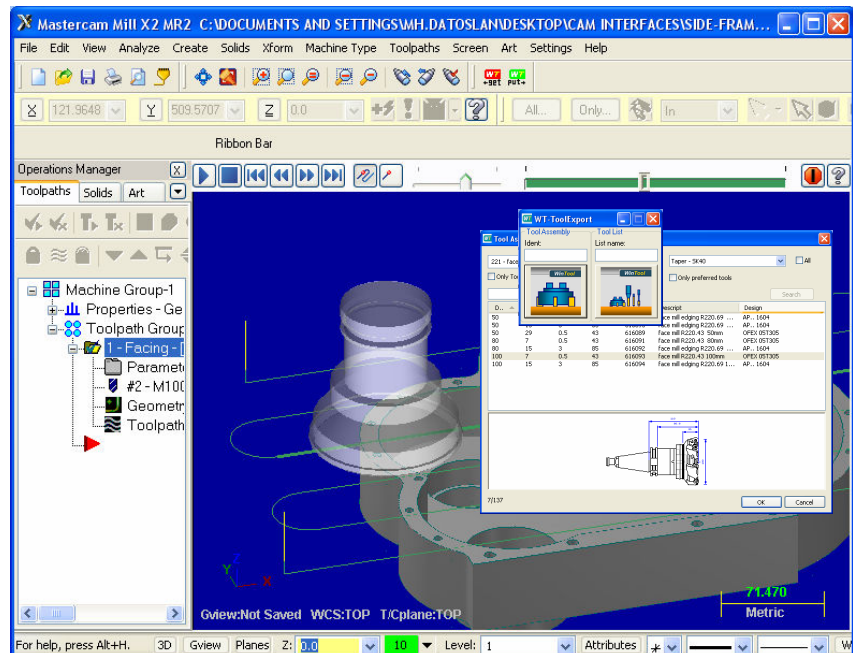
- *WinTool* presetting interface (incl. Speroni, Zoller, Kelch, DMG etc.)
- *WinTool* Logistics/Purchasing
- *WinTool* Revision Control

Requirements

- Windows XP, Vista, opt. 64bit
- *WinTool* Professional 2008
- Mastercam X2, X3

DATOS

www.wintool.com



Work Process

- Pick realistic tools from the *WinTool* database or quickly specify new ones.
- Use for programming only tools with exact geometry, 3D model, and proven technology.
- Let *WinTool* generate a detailed setup sheet from the tools used in the NC program.

Your Advantages

- Integrate your tooling process in production and integrate Mastercam easily.
- Program with real tool representations and proven f/s technology values.
- Work with professional setup instruction for an error-free and efficient manufacturing process.

Mastercam®