

Tool Data Library for CNC Manufacturing

Easy to use, powerful features.

WinTool Professional is the easiest and most powerful solution for technical tool documentation for CNC manufacturing. Tool components, assemblies, and lists are stored in a central database that can be accessed by users in engineering, production, and administration. *WinTool Interfaces* directly to CAM systems, presetting gauges and ERP systems delivering seamless integration into existing company solutions. With *WinTool* in record time you can build your own component library and systematically generate material-specific cutting data library. *WinTool* generates graphic tool assemblies quickly including exact collision dimensions.

Features

Tool Library

- Professional documentation of tool components, assemblies and lists
- Fast and error-proof tool assembly with automatic dimensioning
- Individual setting of tool length/width, cutting length, tool life etc.
- Measuring-points and instructions
- Integrated tool manufacturer catalogs
- Search filters and usage detection
- Customisable print reports
- Cutting data calculation and archive
- 2D CAD for component drawings

Options

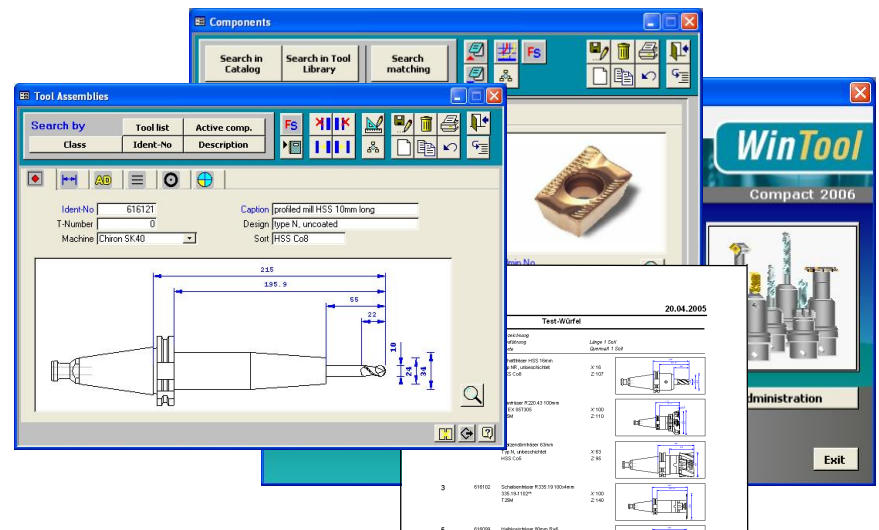
- 3D CAM interfaces
- Logistics, storage, and purchasing
- Job-Planner and Net-list calculator
- Interface for presetting gauges (Kelch, Zoller etc.)
- ISO/FDA revision control
- DXF-Generator for tool drawings

Requirements

- Windows NT, 2000, XP

Machine Tool Technology & Sales

817-265-0983 ext 104
www.MTTS.net



Work Process

- Non-redundant tool data recording, consistent identification and classification
- Quick error-free tool assembly and search for deployed tools with useful filters
- Tool geometry and technology can be directly transferred to CAM (optional)
- Professionally documented tool lists and drawings reduce mistakes in presetting significantly
- Tool data transparency and analysis allow for better management and boost innovation

Benefits

- *WinTool* data is accessible by all users and no longer stored in isolated applications
- Automatic generation of detailed setup sheets, tool graphics and job-specific instructions
- Direct integration to CAM and presetting gauges eliminating communication errors and questions
- Fast tool data collection due to manufacturer catalogs and DXF-Generator
- *WinTool* is the platform for an integrated, error-free tooling workflow in your CNC-production
- Use the free *WinTool Compact* license to view tool library data throughout the company